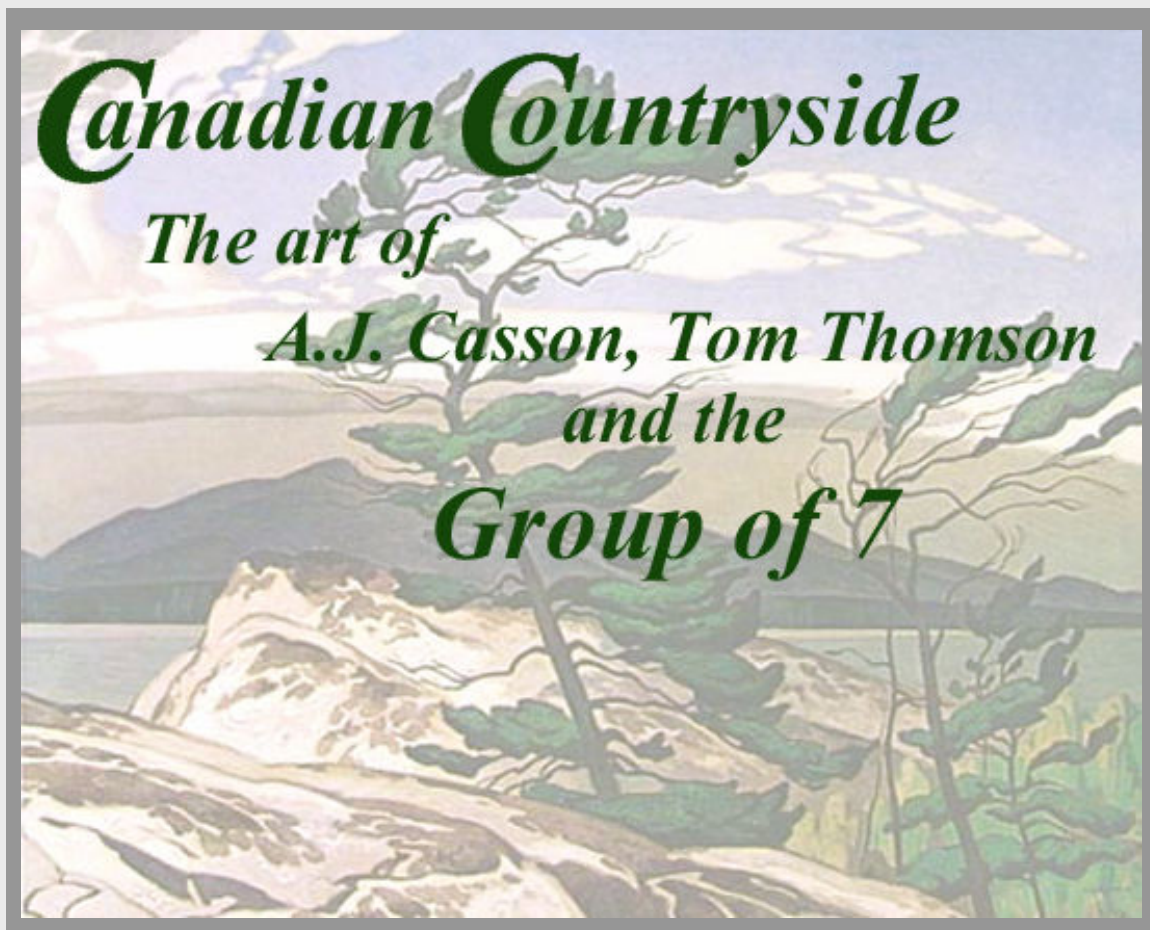


*As a tribute to Tom Thomson and a desire to keep alive the style he pioneered, The Group of Seven was founded in 1920 by Canadian painters Franklin Carmichael, Lawren Harris, A. Y. Jackson, Franz Johnston, Arthur Lismer, J. E. H. MacDonald and Frank Varley. They sought to paint their native landscape in a distinctly Canadian manner.*

*The rocks, trees, and lakes of Canada's north became, for them, symbols of national pride and greatness and has continued to affect the way in which all Canadians today view their native land.*



**Limited Edition Collectibles**

# STANDARD FRAMING OPTIONS

## DELUXE MATS

ALL IMAGES ARE PRESENTED WITH DELUXE "COLOUR-COORDINATED" MATS AND DECORATIVE, EMBOSSED FILLET.

#SFA



**CREAM DELUXE**

MOULDING: 8255 MAHOGANY FILLET: 5054 BRUSHED GOLD

#SFB



**CREAM / CHARCOAL DELUXE**

MOULDING: 8255 MAHOGANY FILLET: FJS GOLD

#SFC



**CHARCOAL / BURGUNDY DELUXE**

MOULDING: 8255 MAHOGANY FILLET: FJS BLACK

## FILLET OPTIONS



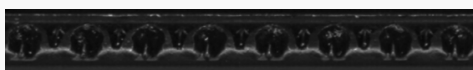
#5054 BRUSHED GOLD



#FJS GOLD



#FIL SILVER BEAD



#FJS BLACK

## MOULDING OPTIONS

### PROFILE # 319 3" WIDE



COLOUR: MAHOGANY

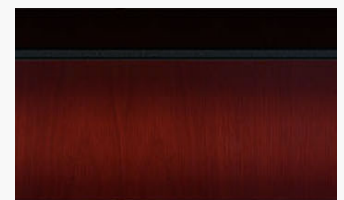


COLOUR: WALNUT

### PROFILE # 8255 3" WIDE



COLOUR: WALNUT



COLOUR: MAHOGANY

**\*NOTE: GLASS SIZE + FRAME WIDTH (X2) - .5" = FINISHED SIZE**

# DELUXE FRAMING OPTIONS

## DELUXE MATS

ALL IMAGES ARE PRESENTED WITH DELUXE "COLOUR-COORDINATED" SUEDE MATS AND DECORATIVE, EMBOSSED FILLET.



**BUCKSKIN DELUXE SUEDE**  
FILLET: FJS GOLD



**PEWTER DELUXE SUEDE**  
FILLET: FJS BLACK

## FILLET OPTIONS



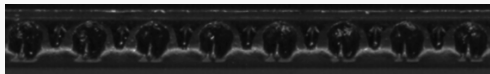
**#5054 BRUSHED GOLD**



**#FJS GOLD**



**#FIL SILVER BEAD**



**#FJS BLACK**

## MOULDING OPTIONS

**PROFILE # 9080 3.5" WIDE**



**COLOUR: BLACK / GOLD**



**COLOUR: BRONZE**

**PROFILE # 1016  
4.5" WIDE**



**COLOUR: BLACK**

**PROFILE # KT2  
4.5" WIDE**



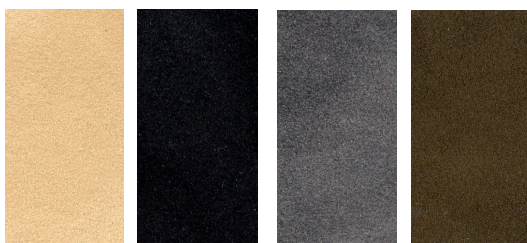
**COLOUR: ESPRESSO**

**PROFILE # 2009  
4.5" WIDE**

**COLOUR: BLACK / GOLD**



## SUEDE MAT OPTIONS



**BUCKSKIN    BLACK    PEWTER    BRONZE**

**\*NOTE: GLASS SIZE + FRAME WIDTH (X2) - .5" = FINISHED SIZE**

# Studio Collection

IMAGE SIZE: 18" X 22"  
GLASS SIZE: 28" X 32"

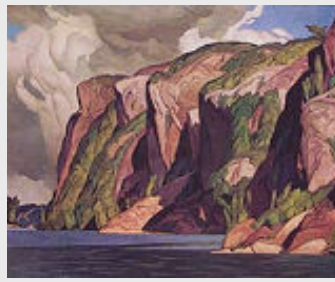
CODE: FACASSON

## A. J. CASSON

One of the members of the Group of Seven, Canada's most celebrated and loved landscape artist, A. J. Casson had a remarkably long and prolific career. For over 70 years, he criss-crossed Ontario, recording its landscape, its villages and rural life in a distinctive painting style that has won him international recognition and acclaim.



**AUTUMN ON THE YORK RIVER**



**BON ECHO, LAKE MAZINAW**



**NEAR NOBEL**



**CRESCENDO**



**PICNIC ISLAND**



**WINTER IN THE VILLAGE**



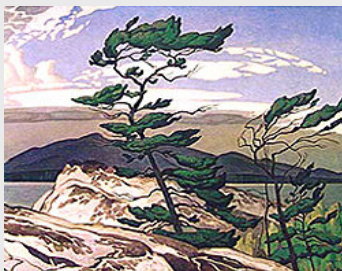
**APPROACHING STORM**



**PRELUDE**



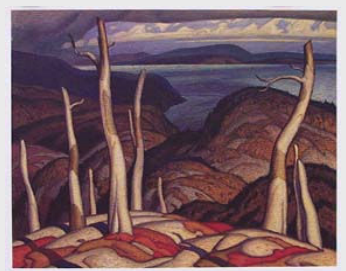
**LAKE KASHAGAWIGAMOG**



**WHITE PINE**



**MARKHAM**



**OCTOBER, LAKE SUPERIOR (OIL)**

# Studio Collection

IMAGE SIZE: 18" X 22"

GLASS SIZE: 28" X 32"

A. J. CASSON

CODE: FACASSON



SUNLIT ISLE



COUNTRY ROAD



RAPIDS ON THE MAGNETAWAN



SUMMER SUN



SUNSHINE AFTER THUNDER



VALLEY FARM



SATURDAY AFTERNOON



MORNING ON THE KEY RIVER



FOG CLEARING



LITTLE ISLAND



WINTER ON THE DON



VILLAGE HOUSE, SUMMER



COUNTRY CRISIS



WHITE VILLAGE



ROCK POOL, CLOCHE HILLS

# Studio Collection

IMAGE SIZE: 18" X 22"

GLASS SIZE: 28" X 32"

A. J. CASSON

CODE: FACASSON



BLUE HERON



GREY MARCH DAY



SNOW FLURRIES



SUMMER MORNING



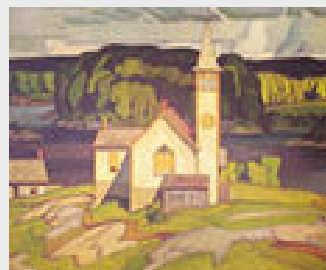
COOL WEATHER



NORTH SHORE LAKE SUPERIOR



VILLAGE MILL



ANGLICAN CHURCH, MAGNETAWAN



SUMMER SKY



WINTER SUN



RED SCHOOLHOUSE



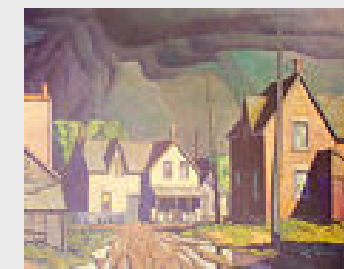
PASSING STORM



FARMHOUSE



OCTOBER STORM CLOUDS



THUNDERSTORM

# Studio Collection

IMAGE SIZE: 18" X 22"

GLASS SIZE: 28" X 32"

A. J. CASSON

CODE: FACASSON



AUTUMN AFTERNOON



BACKWATER



BELOW RAGGED FALLS



YORK MILLS



COUNTRY STORE (NEW)



OLD HOUSE, PARRY SOUND



SUMMER STORM



PARRY SOUND



NORTH CHANNEL



OLD STORE AT SALEM



AFTERMATH



MARCH MORNING



FARMHOUSE, BANCROFT



COUNTRY STORE



VILLAGE IN WINTER

# Studio Collection

IMAGE SIZE: 18" X 22"  
GLASS SIZE: 28" X 32"

A. J. CASSON

CODE: FACASSON



VILLAGE HOUSE, WINTER



EARLY SNOW



ICE HUMMOCKS



LATE FLURRY



MILL AT ELORA



WINTER SUN (WATERCOLOUR)



MILL AT WASHAGO



ROCK CLUSTER



PIKE LAKE



OCTOBER LAKE SUPERIOR  
(WATERCOLOUR)



THE CREDIT FORKS



SPRING LASKAY



ON THE DON



SUN AFTER RAIN



SUMMER HILLSIDE



# Studio Collection

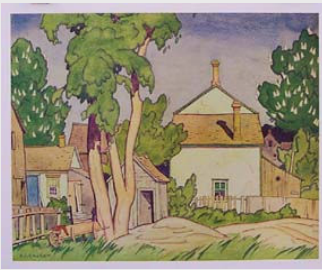
IMAGE SIZE: 18" X 22"  
GLASS SIZE: 28" X 32"

A. J. CASSON

CODE: FACASSON



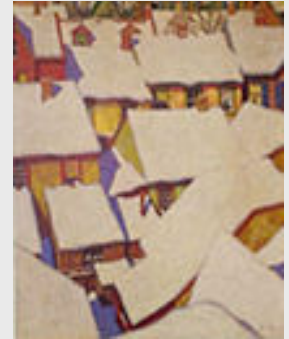
AUGUST,  
ALGONQUIN PARK



EARLY SUMMER NORVAL



VILLAGE OF  
MOUNT ALBERT



HOUSETOPS

# Studio Collection

IMAGE SIZE: 16" X 24"  
GLASS SIZE: 26" X 34"

A. J. CASSON

CODE: FACASSON2



MORNING MIST, ROUGE RIVER



MIST RAIN & SUN



FARMHOUSE NEAR WINGLE



FRESH SNOW WATERDOWN



CASSON LAKE

# ***SPECIAL COLLECTIONS***

***IMAGE SIZE: 17" X 21"    GLASS SIZE: 28" X 32"***

**CODE: FACASSON**



**SPRING BREEZE**  
BY: J.E.H. MacDONALD



**SAW MILL**  
BY: J.E.H. MacDONALD



**ASTERS & APPLES**  
BY: J.E.H. MacDONALD



**MOUNTAIN RAINS**  
BY: J.E.H. MacDONALD



**MONTREAL RIVER**  
BY: J.E.H. MacDONALD



**LAKE WABAGISHIK**  
BY: F. CARMICHAEL



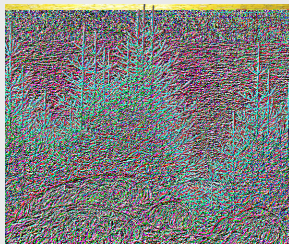
**LIGHT & SHADOW**  
BY: F. CARMICHAEL



**INDIAN CHURCH**  
BY: EMILY CARR



**MONTREAL RIVER**  
BY: LAWREN HARRIS



**YELLOW SKY, BLUE SPRUCE**  
BY: LAWREN HARRIS



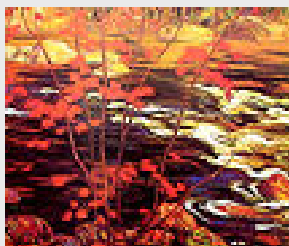
**WINTER AFTERNOON**  
BY: LAWREN HARRIS



**SQUALLY WEATHER,  
GEORGIAN BAY**  
BY: F.H. VARLEY



**QUEBEC VILLAGE 1926**  
BY: F.H. VARLEY



**THE RED MAPLE**  
BY: A.Y. JACKSON



**SAINT TITE-DES-CAPS**  
BY: A.Y. JACKSON

# FRANKLIN CARMICHAEL

IMAGE SIZE: 15.5" X 19.75"

GLASS SIZE: 24" X 28"

CODE: FACDNHERT

Although he was one of the original members of the Group of Seven, he is perhaps more closely associated with the artists who joined in later years-Fitzgerald, Casson and Holgate. Carmichael was always on the fringe of the Group, probably due to the difference in age and possibly because he worked full time as a commercial artist. Most members of the Group seemed to have the attitude that teaching art was an honourable vocation, but they attached a stigma to working in the commercial field. This seems rather ironic considering almost all members started out in this area. Later in his career, Frank taught at the Ontario College of Art, where he had studied.



LAKE SUPERIOR



MIRROR LAKE



DROWNED LAND



EVENING, LAKE SUPERIOR



GRACE LAKE



CRANBERRY LAKE



SUNSHOWER,  
LAKE SUPERIOR



UPPER OTTAWA



NORTHTOWN

# LAWREN HARRIS

IMAGE SIZE: 15.5" X 19.75"

GLASS SIZE: 24" X 28"

CODE: FACDNHRT

Lawren Harris was born in Brantford, Ontario and at the age of nineteen went to Berlin for academic training. Upon returning to Toronto, he met J.E.H. MacDonald who shared his vision of a new and distinctive way of depicting the Canadian landscape. Harris became the driving force behind the Group of Seven. A.Y. Jackson claimed: "Without Harris there would have been no Group of Seven. He provided the stimulus; it was he who encouraged us always to take the bolder course, to find new trails."



PIC ISLAND



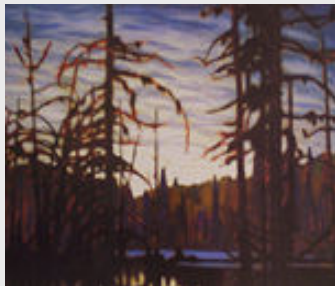
FIRST SNOW, ALGOMA



McCALLUM LAKE



ABOVE LAKE SUPERIOR



BEAVER SWAMP



SUNSET,  
KEMPENFELT BAY



NORTHERN HOUSES,  
REAR VIEW



HOUSES,  
WELLINGTON STREET



SERENITY,  
LAKE SUPERIOR



SUMMER HOUSE, BARRIE



HURDY GURDY



NORTHERN FOREST



MALIGNE LAKE

# TOM THOMSON

OPTION 1  
IMAGE SIZE: 15.5" X 19.75"  
GLASS SIZE: 24" X 28"

CODE: FACDNHERT

The best-known Canadian landscapist of his time, Tom Thomson, b. Claremont, Ont. Aug. 4, 1877, made his first trip to Algonquin Park in northern Ontario in 1912. His wilderness subjects had great influence on later Canadian landscapists, especially the Group of Seven. Although his career was cut short by his tragic drowning in 1917, he has since become a legendary figure in Canadian painting.



THE WEST WIND



THE JACK PINE



ROUND LAKE



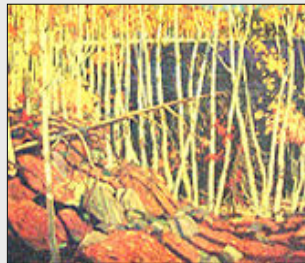
ARTISTS CAMP



BURNT OVER FOREST



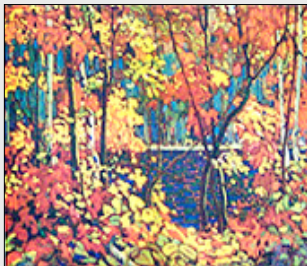
AUTUMN FOLIAGE



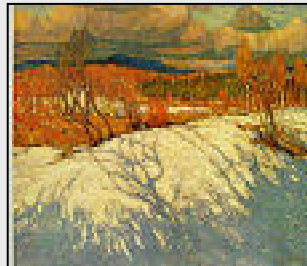
IN THE NORTHLAND



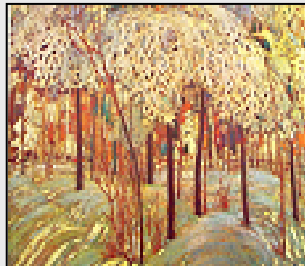
FIRST SNOW



THE POOL



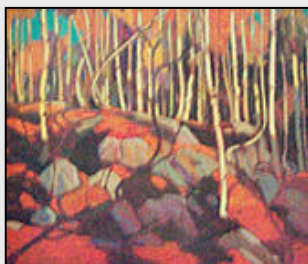
AFTERNOON, ALGONQUIN PARK



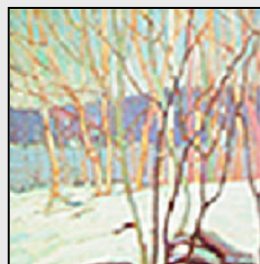
SNOW IN OCTOBER



THE DRIVE



THE BIRCH GROVE



WHITE BIRCH GROVE



PINE ISLAND,  
GEORGIAN BAY



SPLIT ROCK GAP

# TOM THOMSON

OPTION 2  
IMAGE SIZE: 18" X 22"  
GLASS SIZE: 28" X 32"

CODE: FACDNHERT

The best-known Canadian landscapist of his time, Tom Thomson, b. Claremont, Ont. Aug. 4, 1877, made his first trip to Algonquin Park in northern Ontario in 1912. His wilderness subjects had great influence on later Canadian landscapists, especially the Group of Seven. Although his career was cut short by his tragic drowning in 1917, he has since become a legendary figure in Canadian painting.



EVENING SPLIT ROCK



EVENING CANOE LAKE



SNOW IN THE WOODS



FRESH SNOW



SPRING IN ALGONQUIN PARK



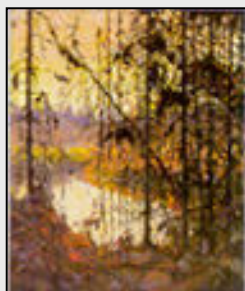
BYNG INLET, GEORGIAN BAY



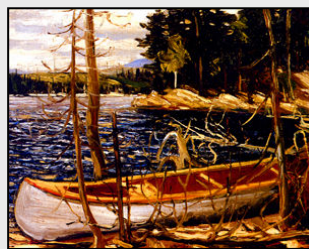
SOUTH SHORE, CANOE LAKE



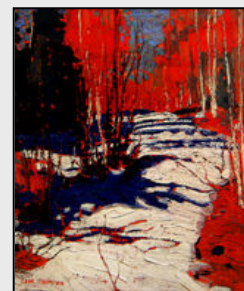
DAWN



NORTHERN RIVER



THE CANOE



BEHIND MOWAT'S LODGE

# CANADIAN HERITAGE

IMAGE SIZE: 14.5" X 18"

GLASS SIZE: 24" X 28"

CODE: FACDNHERT

## COLLECTION *"THE BEST OF THE GROUP OF 7"*

These images have been painstakingly reproduced using as many as 14 handmixed colours on a single colour rotary press. Colours are truer to the original and the special non-fade inks ensure viewing enjoyment for many years to come.



**SNOW II**  
**LAWREN HARRIS**



**ALGOMA WATERFALL**  
**J.E.H. MACDONALD**



**SUMMER DAY**  
**A.J. CASSON**



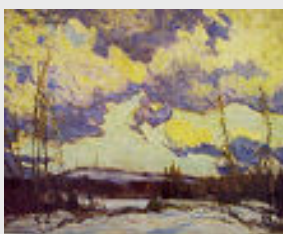
**OPEN STREAM, JASPER PARK**  
**ALBERTA**  
**FRANK JOHNSTON**



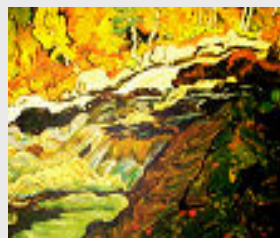
**SHACKS**  
**LAWREN HARRIS**



**RETURN FROM CHURCH**  
**LAWREN HARRIS**



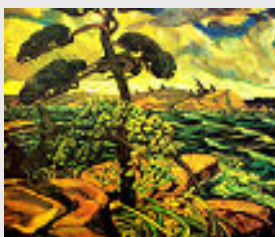
**MARCH EVENING,**  
**NORTHLAND**  
**J.E.H. MACDONALD**



**BATCHAWANA RAPIDS**  
**J.E.H. MACDONALD**



**ISLAND, GEORGIAN BAY**  
**FRANKLIN CARMICHAEL**



**A SEPTEMBER GALE,**  
**GEORGIAN BAY**  
**ARTHUR LISMER**

# Masterpiece Collection

IMAGE SIZE: 8" X 10"  
GLASS SIZE: 15.5" X 16.5"

## SPECIAL EDITION

CODE: FATTN



TITLE: In The Northland  
ARTIST: Tom Thomson



TITLE: First Snow, Algoma  
ARTIST: Lawren Harris



TITLE: Above Lake Superior  
ARTIST: Lawren Harris



TITLE: Mirror lake  
ARTIST: Franklin Carmichael



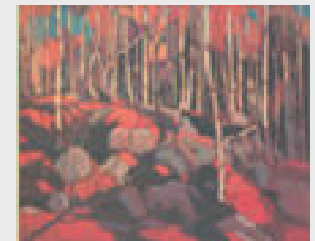
TITLE: Pic Island  
ARTIST: Lawren Harris



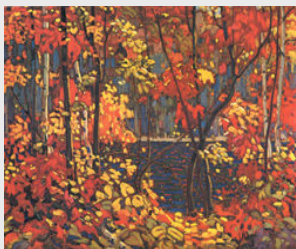
TITLE: The Jack Pine  
ARTIST: Tom Thomson



TITLE: Houses, Wellington Street  
ARTIST: Lawren Harris



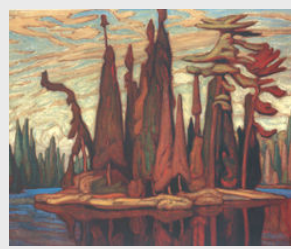
TITLE: The Birch Grove  
ARTIST: Tom Thomson



TITLE: The Pool  
ARTIST: Tom Thomson



TITLE: Grace Lake  
ARTIST: Franklin Carmichael



TITLE: McCallum Lake  
ARTIST: Lawren Harris



TITLE: The West Wind  
ARTIST: Tom Thomson



# Masterpiece Collection

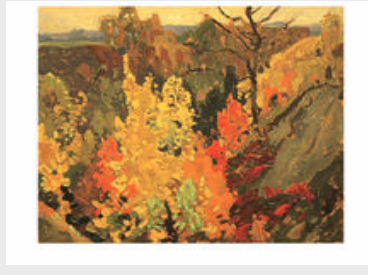
IMAGE SIZE: 7" X 8.5"  
GLASS SIZE: 15.5" X 16.5"

FRANKLIN CARMICHAEL

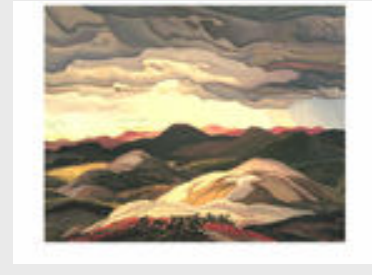
CODE: FATTN



A GREY DAY 1928



AUTUMN 1921



SNOW CLOUDS 1938



LAKE SUPERIOR 1929



LA CLOCHE HILLS 1939



GRACE LAKE 1934



FESTIVE AUTUMN 1921



AUTUMN FOLIAGE AGAINST  
GREY ROCK 1921



HILLS, CRANBERRY LAKE  
1936



ROUGE VALLEY,  
THORNHILL 1919



SOMBRE VALLEY 1937



THE HILLTOP 1921

# Masterpiece Collection

IMAGE SIZE: 7" X 8.5"  
GLASS SIZE: 15.5" X 16.5"

FRANKLIN CARMICHAEL

CODE: FATTN



UPPER OTTAWA 1924



WABAGISHIK, DROWNED  
LAND 1929



FALLING LEAVES,  
AUTUMN



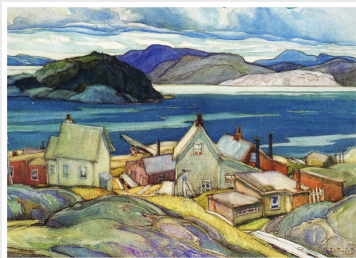
SNOW FLURRIES,  
LAKE SUPERIOR



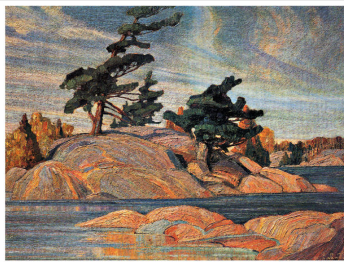
MIRROR LAKE



LA CLOCHE, MOUNTAIN  
AND LAKE



JACKFISH VILLAGE



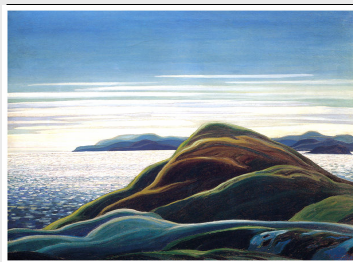
ISLAND, GEORGIAN  
BAY



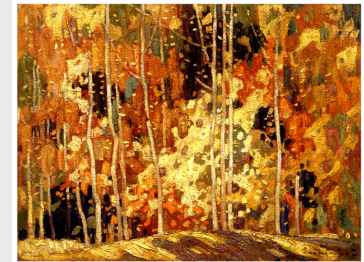
SILVERY TANGLE



RED MAPLES 1922



NORTH SHORE,  
LAKE SUPERIOR



FANCIFUL AUTUMN

# Masterpiece Collection

IMAGE SIZE: 7" X 8.5"  
GLASS SIZE: 15.5" X 16.5"

FRANKLIN CARMICHAEL

CODE: FATTN



THE NICKEL BELT 1928



BAY OF ISLANDS



HARVESTING,  
ORILLIA



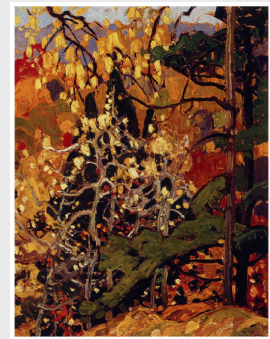
OCTOBER GOLD  
1922



AUTUMN,  
ORILLIA 1924



TREES AND VALLEY  
1920



AUTUMN  
SPLENDOUR



SUMACS 1915

# Masterpiece Collection

IMAGE SIZE: 6.5" X 8"  
GLASS SIZE: 15.5" X 16.5"

LAWREN HARRIS

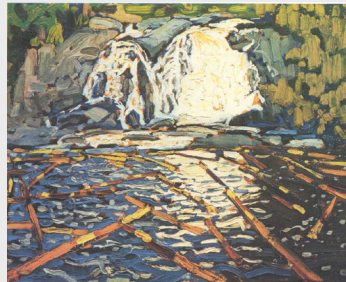
CODE: FATTN



ALGONIA WATERFALL



RETURN FROM CHURCH



AGAWA FALLS



EDGE OF TOWN, JANUARY



ALGONIA REFLECTIONS



WINTER MORNING



SPRING, OXTONGUE RIVER



HOUSES IN WINTER



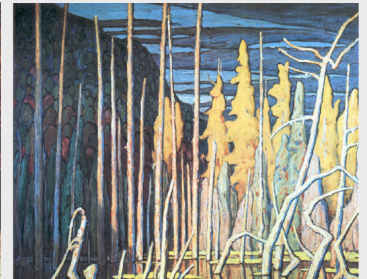
GREY DAY IN TOWN



SIDESTREET



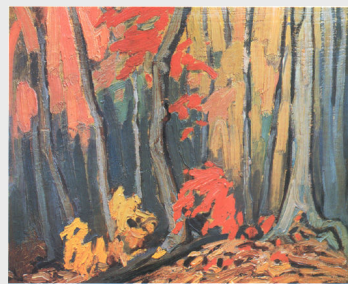
HOUSES,  
RICHMOND STREET



TAMARACK SWAMP



ELEVATOR COURT,  
HALIFAX



WOOD INTERIOR,  
ALGOMA



HOUSES,  
CHESTNUT STREET

# Masterpiece Collection

IMAGE SIZE: 7" X 8.5"  
GLASS SIZE: 15.5" X 16.5"

## J. E. H. MacDONALD

CODE: FATTN

J.E.H. MacDonald was born in Durham, England and in 1887 immigrated to Canada, settling in Hamilton, Ontario. He studied art at the Hamilton Art School and the Central Ontario School of Art and Design, Toronto.

MacDonald's interest in sketching the rugged Canadian landscape resulted in many excursions throughout Quebec and Ontario, including St. Jovite and Algonquin Park. He also traveled throughout the Rockies and produced many memorable paintings of this mountainous landscape.



MARCH EVENING,  
NORTHLAND 1914



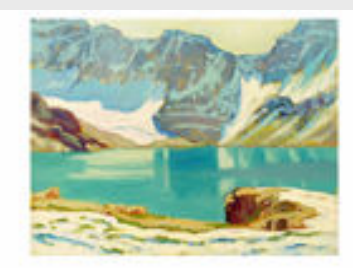
LOGS, TURTLE  
LAKE 1921



LAKE O'HARA II  
1930



LAKE O'HARA  
1930



LAKE MACARTHUR,  
YOHO PARK 1924



LAKE MACARTHUR,  
1925



LAKE & MOUNTAINS  
1924



FARM AT THORNHILL  
1927



EVENING FIELDS,  
THORNHILL 1931



ELMS 1931



DARK AUTUMN,  
ROCKY MTNS. 1930



CLOUDS AT SPLIT  
ROCK 1912

# Masterpiece Collection

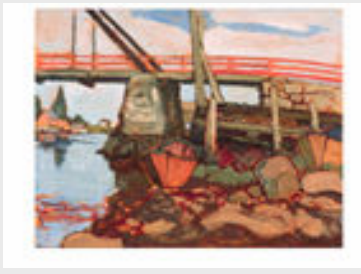
IMAGE SIZE: 7" X 8.5"  
GLASS SIZE: 15.5" X 16.5"

J.E.H. MACDONALD

CODE: FATTN



CLEARING WEATHER,  
SHERBROOKE LAKE 1928



BRIDGE AT  
PETITE RIVIERE 1922



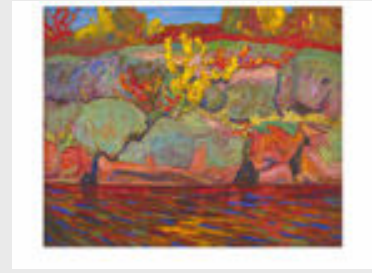
BATCHAWANA RAPIDS  
1920



ASTERS & APPLES 1917



AUTUMN IN ALGOMA  
1922



AUTUMN COLOURS,  
ROCK AND MAPLE 1916



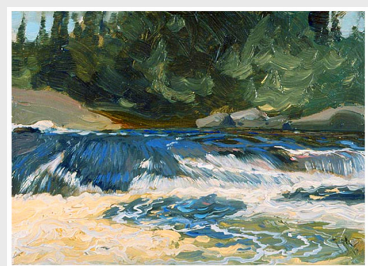
ALGOMA BUSH,  
AUTUMN 1921



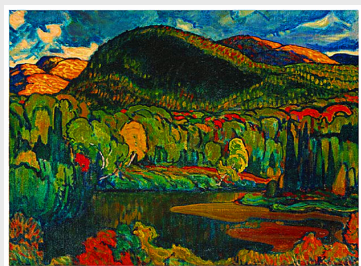
ALGOMA 1920



WINDY BAY, LITTLE  
TURTLE LAKE 1922



SPRING RAPIDS 1912



GLEAMS ON THE HILLS  
1912



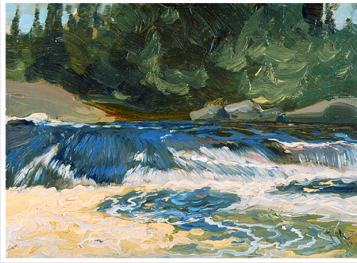
SPRING BREEZES,  
HIGH PARK 1912

# Masterpiece Collection

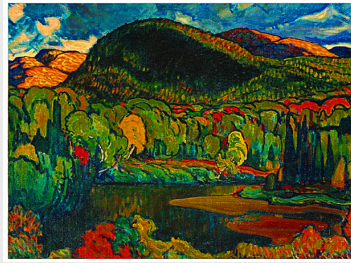
IMAGE SIZE: 7" X 8.5"  
GLASS SIZE: 15.5" X 16.5"

J.E.H. MACDONALD

CODE: FATTN



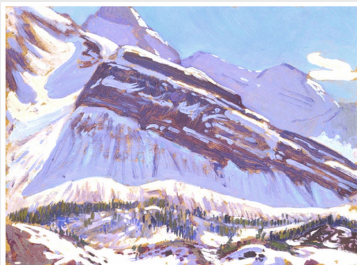
SPRING RAPIDS 1912



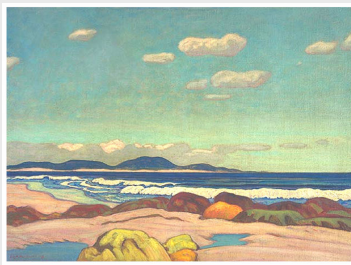
GLEAMS ON THE HILLS  
1912



SPRING BREEZES,  
HIGH PARK 1912



SEPTEMBER SNOW ON  
MOUNT SCHAFFER 1929



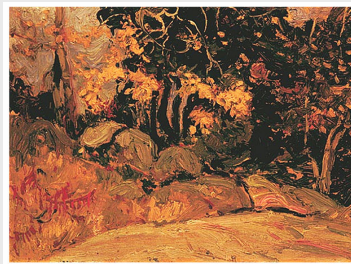
SEASHORE, NOVA  
SCOTIA 1923



SAWMILL 1912



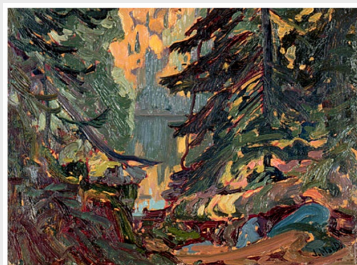
RAIN, WIWAXY PEAKS  
1925



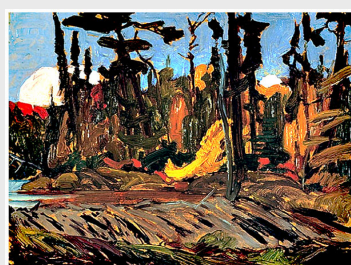
POPLAR & PINE 1919



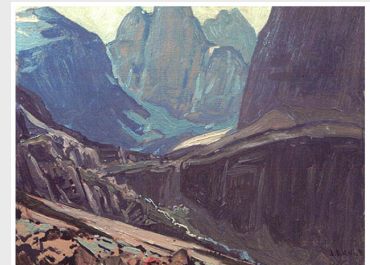
OTTERTAIL VALLEY  
1930



NEAR MONTREAL LAKE  
1919



NEAR MONGOOSE LAKE  
1918



ABBOT PASS 1930

# Masterpiece Collection

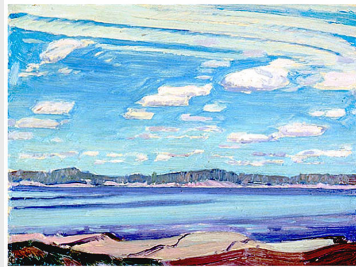
IMAGE SIZE: 7" X 8.5"  
GLASS SIZE: 15.5" X 16.5"

J.E.H. MACDONALD

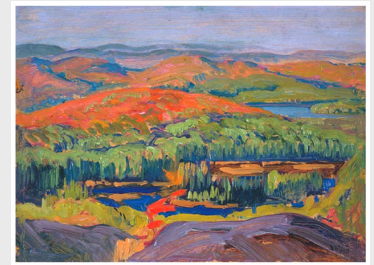
CODE: FATTN



MOUNTAINS AND  
LARCHES 1930



STURGEON BAY 1931



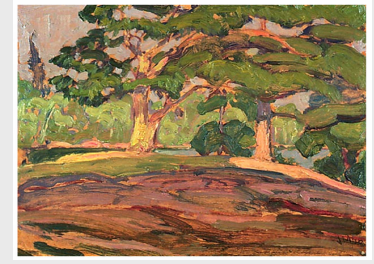
AUTUMN COLOUR 1920



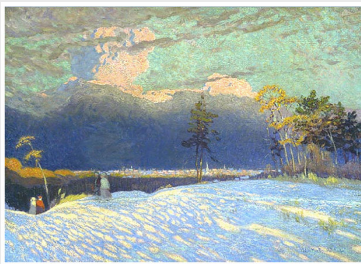
THE TANGLED GARDEN  
1916



THE SOLEMN LAND



THE NARROWS, GULL  
RIVER 1926



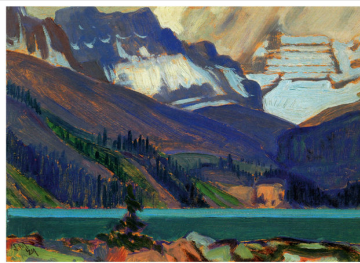
THE EDGE OF TOWN,  
WINTER SUNSET  
1914



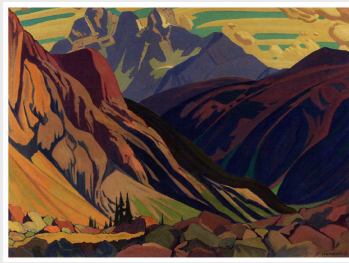
SUNLIT WATER 1912



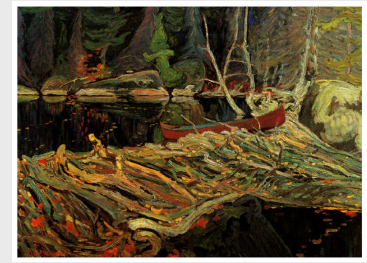
ALGOMA 1919-1921



SNOW CLOUDS,  
LAKE O'HARA



MOUNT GOODSIR,  
YOHO PARK



THE BEAVER DAM



# Masterpiece Collection

IMAGE SIZE: 7" X 8.5"  
GLASS SIZE: 15.5" X 16.5"

J.E.H. MACDONALD

CODE: FATTN



NOVA SCOTIA  
COASTAL SCENE



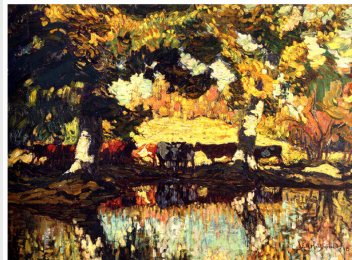
OCTOBER SHOWER  
GLEAM



THE ELEMENTS



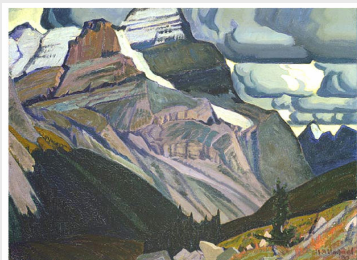
THE WILD RIVER



CATTLE BY THE  
CREEK 1918



LOGS IN THE  
GATINEAU 1915



DARK AUTUMN, ROCKY  
MOUNTAINS 1930



MONTREAL LAKE,  
ALGOMA 1919



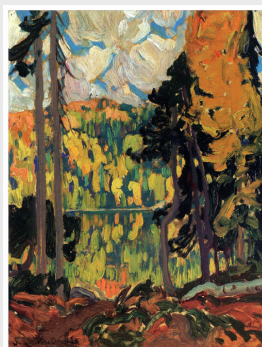
MONGOOSE LAKE 1920



A NORTHERN  
HOME



MIST FANTASY 1920



ON MONGOOSE  
LAKE

**TOM THOMSON**  
***“DELTA COLLECTION”***

**IMAGE SIZE: 6.15”X 7.25”**  
**GLASS SIZE: 15.5” X 16.5”**

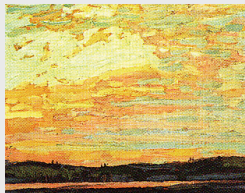
**CODE: FATTN**



**“ Sunset, Canoe Lake”**



**“ Grey Sky”**



**“ Sunset Sky II”**



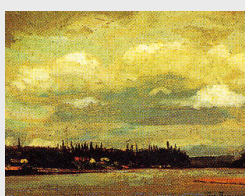
**“ Snow Shadows”**



**“ Silver Birches”**



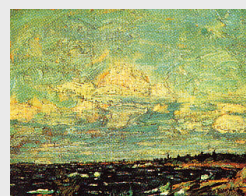
**“ Black Spruce”**



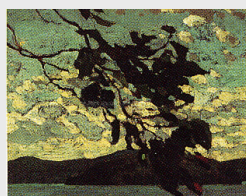
**“ View Over Lake”**



**“ Sunset”**



**“ Windy Day”**



**“ In Algonquin Park”**



**“ Northern Lake, Early Winter”**



**“ Spring in Algonquin Park”**



**“ Giant's Tomb”**



**“ Summer Clouds”**



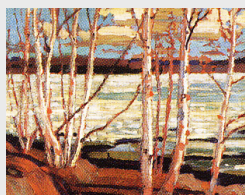
**“ Tamaracks”**



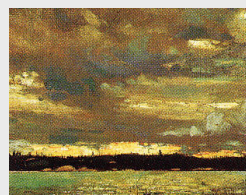
**“ Autumn Foliage”**



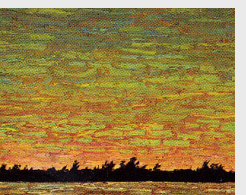
**“ Rain Clouds”**



**“ Early Spring II”**



**“ Sunset Sky”**



**“ Windy Sky”**

**TOM THOMSON**  
***“DELTA COLLECTION”***

**IMAGE SIZE: 6.15”X 7.25”**  
**GLASS SIZE: 15.5” X 16.5”**

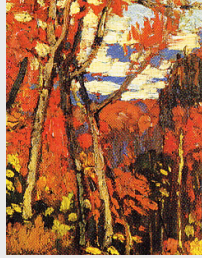
**CODE: FATTN**



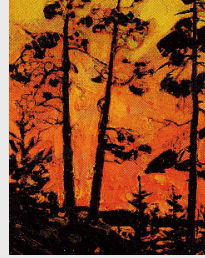
**“ October  
Algonquin”**



**“ Red Rocks”**



**“ Autumn  
Landscape”**



**“ Pine Trees at  
Sunset”**



**“ October  
Afternoon”**



**“ Pine Island”**



**“ Evening, Canoe Lake”**



**“ Canoe Lake”**



**“ Early Spring”**



**“ Late Snow”**



**“ Algonquin Park”**



**“ Evening Clouds”**



**“ Storm Clouds”**



**“ Sunrise”**



**“ Canoe Lake II”**



**“ Open Water,  
Joe Creek”**



**“ Northland Sunset”**



**“ Spring Flood”**



**“ Autumn, Algonquin”**

# Masterpiece Collection II

IMAGE SIZE: 7" X 8.5"  
GLASS SIZE: 15.5" X 16.5"

TOM THOMSON

CODE: FATTN



A RAPID



AFTER THE SLEET  
STORM



AFTERNOON  
ALGONQUIN PARK



ALGONQUIN PARK



AN ICE COVERED  
LAKE



APRIL IN ALGONQUIN  
PARK



ARTIST'S CAMP



AUTUMN ALGONQUIN  
PARK



AUTUMN BIRCHES



AUTUMN BIRCHES & POPLARS  
CANOE LAKE



AUTUMN FOLIAGE



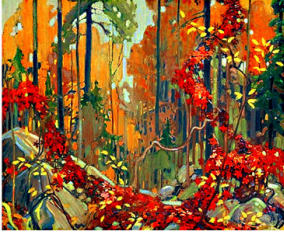
AUTUMN  
FOLIAGE 1916

# Masterpiece Collection II

IMAGE SIZE: 7" X 8.5"  
GLASS SIZE: 15.5" X 16.5"

TOM THOMSON

CODE: FATTN



AUTUMNS GARLAND



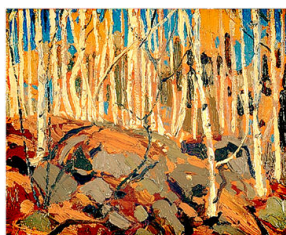
BATEAUX



BIG BIRCH



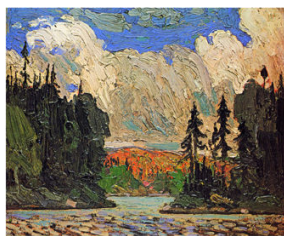
BIRCH BY A LAKE  
1916



BIRCHES 1915



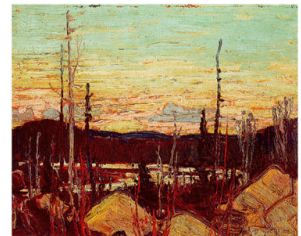
BIRCHES 1916



BLACK SPRUCE



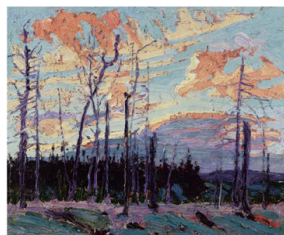
BLACK SPRUCE &  
MAPLE



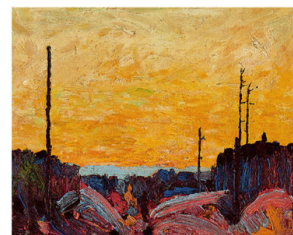
BURNT AREA WITH  
RAGGED ROCKS



BURNT LAND  
1915



BURNT LAND AT  
SUNSET



BURNT OVER  
LAND

# Masterpiece Collection II

IMAGE SIZE: 7" X 8.5"  
GLASS SIZE: 15.5" X 16.5"

TOM THOMSON

CODE: FATTN



BYNG INLET  
GEORGIAN BAY



CAMPFIRE  
1916



CANADIAN  
WILDFLOWERS 1915



CANOE LAKE



CANOE LAKE  
II



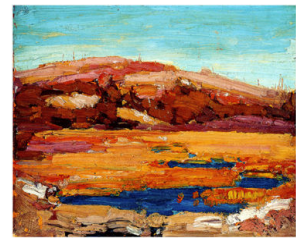
CANOE LAKE  
MOWAT LODGE



COLD SPRING  
ALGONQUIN PARK



COTTAGE ON A  
ROCKY SHORE



CRANBERRY  
MARSH



DAWN



DECORATIVE LANDSCAPE  
BIRCHES



EARLY APRIL  
1916

# Masterpiece Collection II

IMAGE SIZE: 7" X 8.5"  
GLASS SIZE: 15.5" X 16.5"

TOM THOMSON

CODE: FATTN



EARLY SNOW  
WINTER



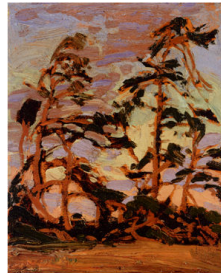
EARLY SPRING  
ALGONQUIN PARK



EARLY SPRING  
CANOE LAKE



EARLY SPRING  
II



EVENING  
PINE ISLAND



FIGURE OF A LADY



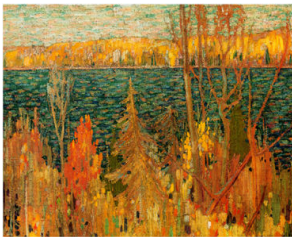
FIRST SNOW IN  
AUTUMN 1916



FORBES HILL  
HUNTSVILLE



FROST LADEN  
CEDARS



GOLDEN AUTUMN



HILLS AND  
SWIRLING SKY 1915



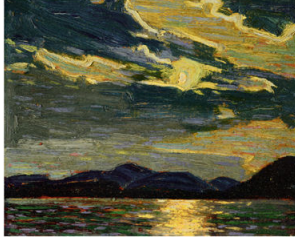
HILLSIDE SMOKE  
LAKE 1914

# Masterpiece Collection II

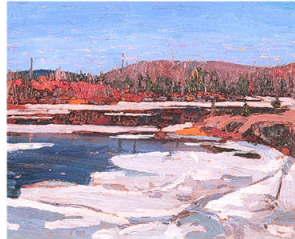
IMAGE SIZE: 7" X 8.5"  
GLASS SIZE: 15.5" X 16.5"

TOM THOMSON

CODE: FATTN



HOT SUMMER  
MOONLIGHT



ICE IN  
SPRING 1916



IN THE  
NORTHLAND



IN THE WOODS  
1917



LAKE AND  
RED TREES



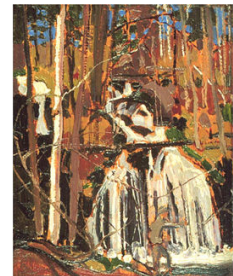
LAKESIDE SPRING  
ALGONQUIN PARK



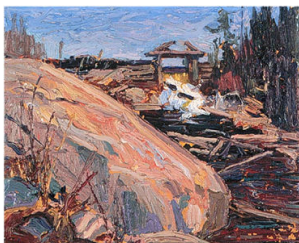
LARRY DICKSON'S  
CABIN



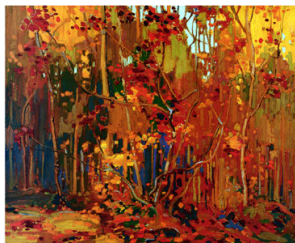
LARRY DICKSON'S  
SHACK



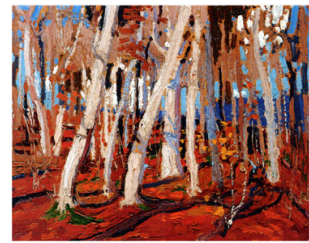
LITTLE CAUCHON  
LAKE



LUMBER DAM  
1915



MAPLE  
SAPLINGS



MAPLE WOODS

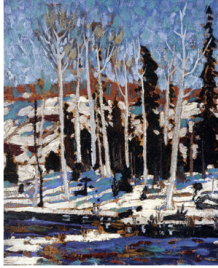


# Masterpiece Collection II

IMAGE SIZE: 7" X 8.5"  
GLASS SIZE: 15.5" X 16.5"

TOM THOMSON

CODE: FATTN



MARCH



MELTING  
SNOW



MOCCASIN  
FLOWER



MOONLIGHT



MOONLIGHT  
ALGONQUIN PARK



MOOSE AT NIGHT



MOWAT LODGE



NEAR GRAND LAKE  
ALGONQUIN PARK



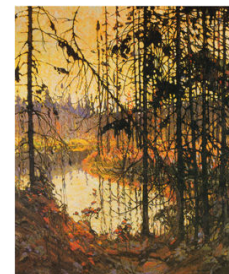
NOCTURNE



NOCTURNE THE  
BIRCHES



NORTHERN LIGHTS



NORTHERN  
RIVER

# Masterpiece Collection II

IMAGE SIZE: 7" X 8.5"  
GLASS SIZE: 15.5" X 16.5"

TOM THOMSON

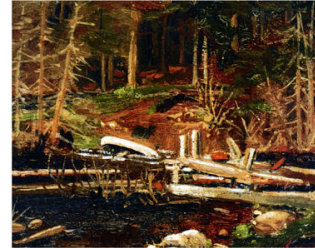
CODE: FATTN



NORTHERN  
SPRING



NORTHLAND  
SUNSET



OLD LUMBER  
DAM



PATH BEHIND  
MOWAT'S LODGE



PETAWAWA  
GORGE



PETAWAWA  
GORGES 1914



PHANTOMS OF  
ALGONQUIN



PINE CLEFT  
ROCKS



PINE COUNTRY



PINE ISLAND



PINE ISLAND  
GEORGIAN BAY



POPLARS BY A LAKE  
1916

# Masterpiece Collection II

IMAGE SIZE: 7" X 8.5"  
GLASS SIZE: 15.5" X 16.5"

TOM THOMSON

CODE: FATTN



PORTAGE  
RAGGED LAKE 1917



RAINBOW



RED LEAVES  
1914



RED SUMACS



RIVER 1915



ROCKY SHORE  
1916



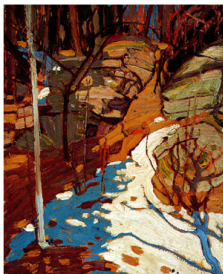
ROUND LAKE



SHACK IN THE  
NORTH COUNTRY



SMOKE LAKE



SNOW AND  
ROCKS



SNOW COVERED  
TREES 1913



SNOW IN THE  
WOODS 1913

# Masterpiece Collection II

IMAGE SIZE: 7" X 8.5"  
GLASS SIZE: 15.5" X 16.5"

TOM THOMSON

CODE: FATTN



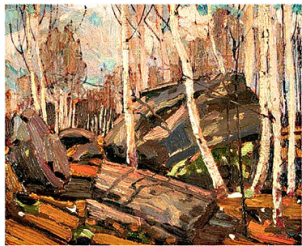
SNOW IN THE  
WOODS II



SPLIT ROCK  
GAP



SPRING 1914



SPRING 1916



SPRING BREAK UP



SPRING CANOE  
LAKE



SPRING FRENCH  
RIVER



SPRING LAKE



SPRING WOODS



SPRUCE AND  
MAPLE 1915



SUMMER DAY



SUNSET  
ALGONQUIN PARK

# Masterpiece Collection II

IMAGE SIZE: 7" X 8.5"  
GLASS SIZE: 15.5" X 16.5"

TOM THOMSON

CODE: FATTN



SUNSET  
CANOE LAKE



TAMARACK  
SWAMP



TAMARACKS



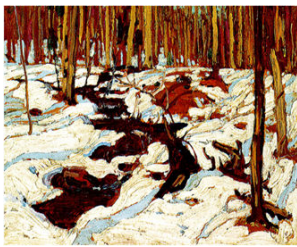
TAMARACKS  
1915



TAMARACKS II



TEA LAKE  
DAM



THAW IN THE  
WOODS



THAW SNOW  
BANKS



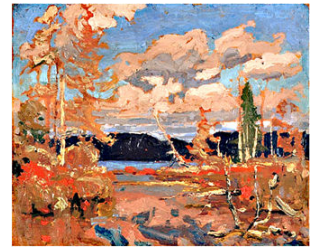
THE BROOK



THE CANOE



THE HILL IN  
AUTUMN



THE LAKE  
BRIGHT DAY 1916

# Masterpiece Collection II

IMAGE SIZE: 7" X 8.5"  
GLASS SIZE: 15.5" X 16.5"

TOM THOMSON

CODE: FATTN



THE LILY POND  
1914



THE OPENING OF  
THE RIVERS



THE POINTERS



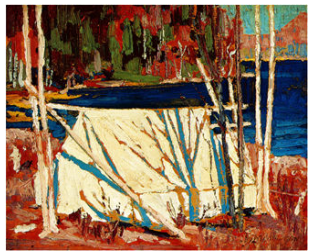
THE POOL



THE RED MAPLE



THE SUMACS



THE TENT



THUNDERCLOUD  
1912



THUNDERHEAD  
PINK CLOUDS



TREES AND  
STUMP 1912



TREES  
CANOE LAKE



VIEW OVER A  
LAKE

# Masterpiece Collection II

IMAGE SIZE: 7" X 8.5"  
GLASS SIZE: 15.5" X 16.5"

TOM THOMSON

CODE: FATTN



WILDFLOWERS



WINDY BIRCHES  
ROUND LAKE



WINDY DAY



WINTER



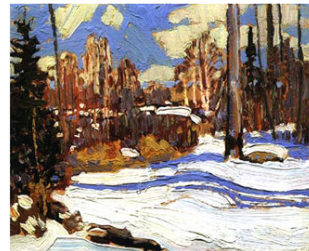
WINTER IN THE  
WOODS



WOOD INTERIOR  
WINTER



WOODLAND  
WATERFALL



WOODS IN WINTER

# TOM THOMSON

## “MINIS”

IMAGE SIZE: 3.85” X 4.85”

GLASS SIZE: 10.5” X 11”

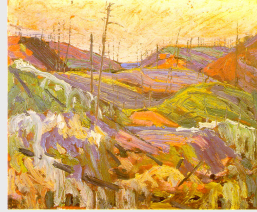
CODE: FATTM



“Black Spruce & Maple”



“Flowers”



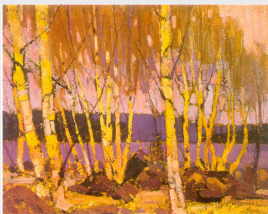
“Fireswept Hills”



“Autumn Hillside”



“Summer Clouds”



“Evening, Canoe Lake”



“Spring Ice”



“Black Spruce”



“Pink Birches”



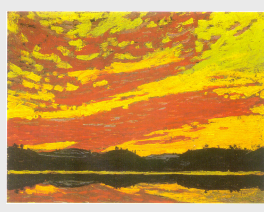
“Birches”



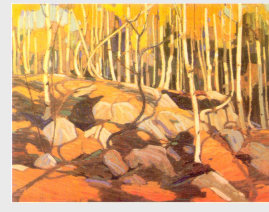
“The Drive”



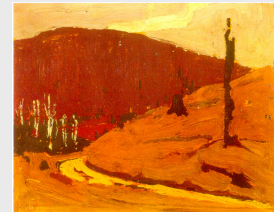
“Bateaux”



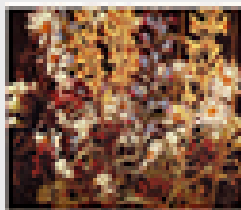
“Sunset”



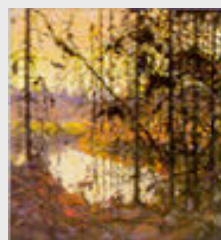
“The Birch Grove”



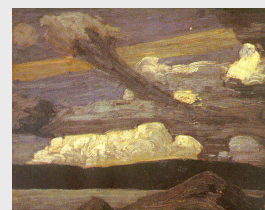
“Sand Hill”



“Wildflowers”



“Northern River”



“Clouds”



# THE PERFECT SIZE

GROUP OF SEVEN FRAMED IMAGES

NOT TOO BIG, NOT TOO SMALL,  
COLOUR & STYLE,  
THE PERFECT SIZE HAS IT ALL!

CODE: FATT2

IMAGE SIZE: 11" X 17"

GLASS SIZE: 18" X 24"



"THE CANOE" BY TOM THOMSON



THE TANGLED GARDEN  
MACDONALD



THE POINTERS  
THOMSON



TAMARACKS II  
THOMSON



SNOW IN THE WOODS II  
THOMSON



TAMARACKS  
THOMSON



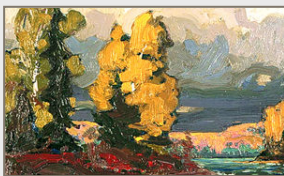
SMOKE LAKE  
THOMSON



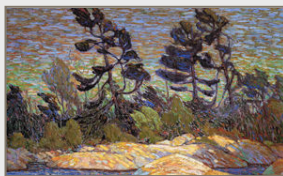
SUNSET, ALGONQUIN PARK  
THOMSON



SPLIT ROCK GAP  
THOMSON



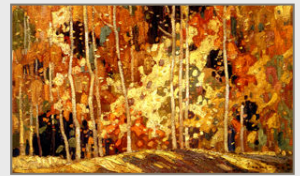
POPLARS BY A LAKE  
THOMSON



BYNG INLET, GEORGIAN BAY  
THOMSON



CANOE LAKE II  
THOMSON



FANCIFUL AUTUMN  
CARMICHAEL



HILLSIDE SMOKE LAKE  
THOMSON



FIRST SNOW IN AUTUMN  
THOMSON



SPRING 1916  
THOMSON



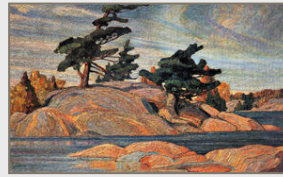
TREES, CANOE LAKE  
THOMSON



SPRUCE & MAPLE  
THOMSON



SUNSET, CANOE LAKE  
THOMSON



ISLAND, GEORGIAN BAY  
CARMICHAEL



LAKE & RED TREES  
THOMSON



AUTUMN FOLIAGE  
THOMSON



AFTERNOON, ALGONQUIN PARK  
THOMSON

**GROUP OF SEVEN**  
***“THE PERFECT SIZE”***

**IMAGE SIZE: 11” X 17”**  
**GLASS SIZE: 18” X 24”**

**CODE: FATT2**



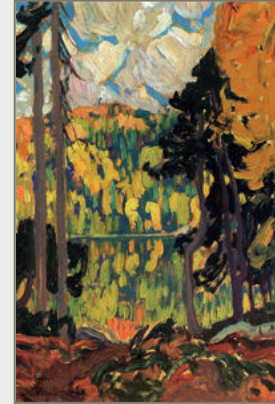
RED ROCKS  
THOMSON



PINE TREES AT SUNSET  
THOMSON



PINE ISLAND, GEORGIAN BAY  
THOMSON



ON MONGOOSE LAKE  
MACDONALD



OCTOBER, ALGONQUIN  
THOMSON



OCTOBER, AFTERNOON  
THOMSON



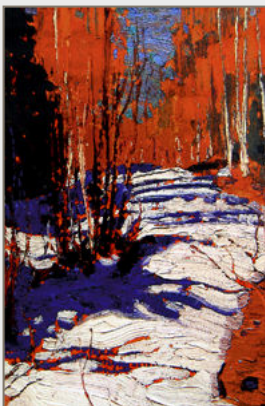
TREES & VALLEY  
CARMICHAEL



OCTOBER GOLD  
CARMICHAEL



NORTHERN RIVER  
THOMSON



BEHIND MOWAT'S LODGE  
THOMSON



AUTUMN LANDSCAPE  
THOMSON



AUTUMN, ORILIA  
CARMICHAEL



AUTUMN SPLENDOUR  
CARMICHAEL

# Tom Thomson Duos



**IMAGE SIZE: 7" X 8.5"**

**CODE: FA494688**

**GLASS SIZE: 15" X 28"**



**CODE: FA494671**

**IMAGE SIZE: 7" X 8.5"**

**GLASS SIZE: 16" X 26"**

Product photos above showcase sample combinations only. Images from The Masterpiece Collection can be mixed and matched as desired.

# Tom Thomson Triptychs

IMAGE SIZE: 7" X 8.5"  
GLASS SIZE: 15" X 40"



CODE: FA495104



CODE: FA494664

Product photos above showcase sample combinations only. Images from The Masterpiece Collection can be mixed and matched as desired.

# TOM THOMSON ON CANVAS

CODE: FA532199

HAND EMBELLISHED TO RE-CREATE  
THE ORIGINAL. KAMAR VARNISH SPRAY  
FOR PERMANENT PROTECTION.

MOULDING: 8255 MAHOGANY W/ LINER  
CANVAS SIZE: 24" X 36"  
OUTSIDE SIZE: 34 1/4" X 46 1/4"



**THE JACK PINE**



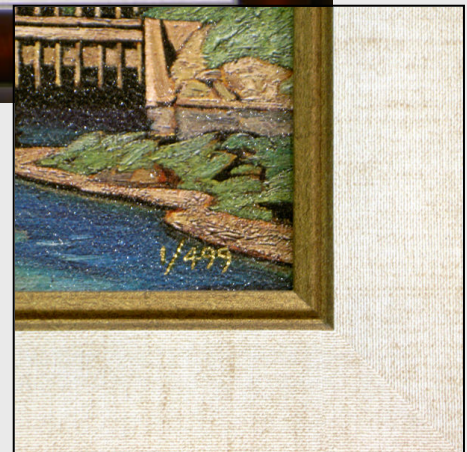
**THE WEST WIND**

HAND NUMBERED IN GOLD, OUT OF 99  
GOLD ACCENTED, LINEN PATTERN LINER, 3" COLOUR GRADUATED MAHOGANY FRAME

# TEXTURED RECREATIONS

CODE: FA532304

Each high quality reproduction is first mounted on masonite. Then an acrylic gel is applied and the picture is in effect recreated by re-doing the brush strokes. A final coat of Kamar varnish gives the shine of the original as well as a washable finish should cleaning be required.



Each piece, unique unto itself is numbered in gold out of 499.

2 EXCLUSIVE PRESENTATION STYLES  
TO CHOOSE FROM

**TRADITIONAL**



3" traditional mahogany finish moulding with delicate embossing. Image is enhanced with deluxe, colour-coordinated genuine suede matting and a contrasting decorative fillet.

**CONTEMPORARY**



3" contemporary "cherry-fade" moulding. Image is enhanced with deluxe, colour-coordinated matting and a contrasting decorative fillet.

**CERTIFICATE OF AUTHENTICITY  
INCLUDED WITH EACH PURCHASE.**

**A. J. CASSON**  
**DIAMOND  
ANNIVERSARY**  
COLLECTION

EXPERT  
CRAFTSMANSHIP  
YOU WOULD EXPECT TO  
FIND IN ONLY THE FINEST  
GALLERIES.

**GENUINE SUEDE MATS**

100% ACID-FREE  
MATERIALS.  
GUARANTEED TO  
GIVE YOU YEARS  
OF VIEWING  
PLEASURE.

ALL IMAGES ARE  
"READY TO HANG"

ALL IMAGES ARE CUSTOM  
FINISHED WITH PAPER DUST  
COVERS ON THE BACK.

**SIZE:**

INSIDE:  
18" X 19"

OUTSIDE:  
23.25" X 24.5"

**ALL IMAGES ARE TITLED AND NUMBERED BY HAND. EDITION OUT OF 1200.**

# A. J. CASSON

# LIMITED EDITIONS

Hand numbered & titled. Edition out of /1200



Afternoon Shadows



Autumn Reflections



Autumn Wind



River's Edge



Drying the Wash



Quiet Street



The Mill Pond, Salem



Sunday Best



Church Street



John Connors House



The Edge of Town



Sleepy Afternoon



Backyards



Heading Home



The Blacksmith Shop



Rooftops



Early Morning



Twilight



Sunshowers



Village Store



