

# TOM THOMSON

OPTION 2  
IMAGE SIZE: 18" X 22"  
GLASS SIZE: 28" X 32"

CODE: FACDNHERT

The best-known Canadian landscapist of his time, Tom Thomson, b. Claremont, Ont. Aug. 4, 1877, made his first trip to Algonquin Park in northern Ontario in 1912. His wilderness subjects had great influence on later Canadian landscapists, especially the Group of Seven. Although his career was cut short by his tragic drowning in 1917, he has since become a legendary figure in Canadian painting.



EVENING SPLIT ROCK



EVENING CANOE LAKE



SNOW IN THE WOODS



FRESH SNOW



SPRING IN ALGONQUIN PARK



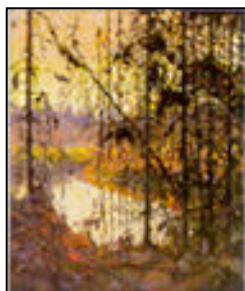
BYNG INLET, GEORGIAN BAY



SOUTH SHORE, CANOE LAKE



DAWN



NORTHERN RIVER



THE CANOE



BEHIND MOWAT'S LODGE